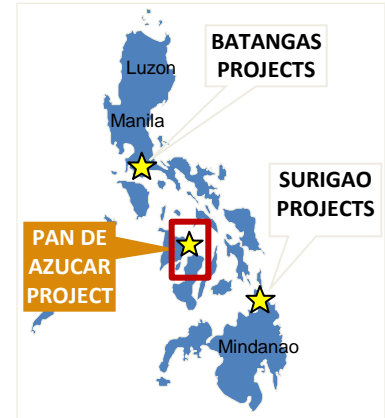
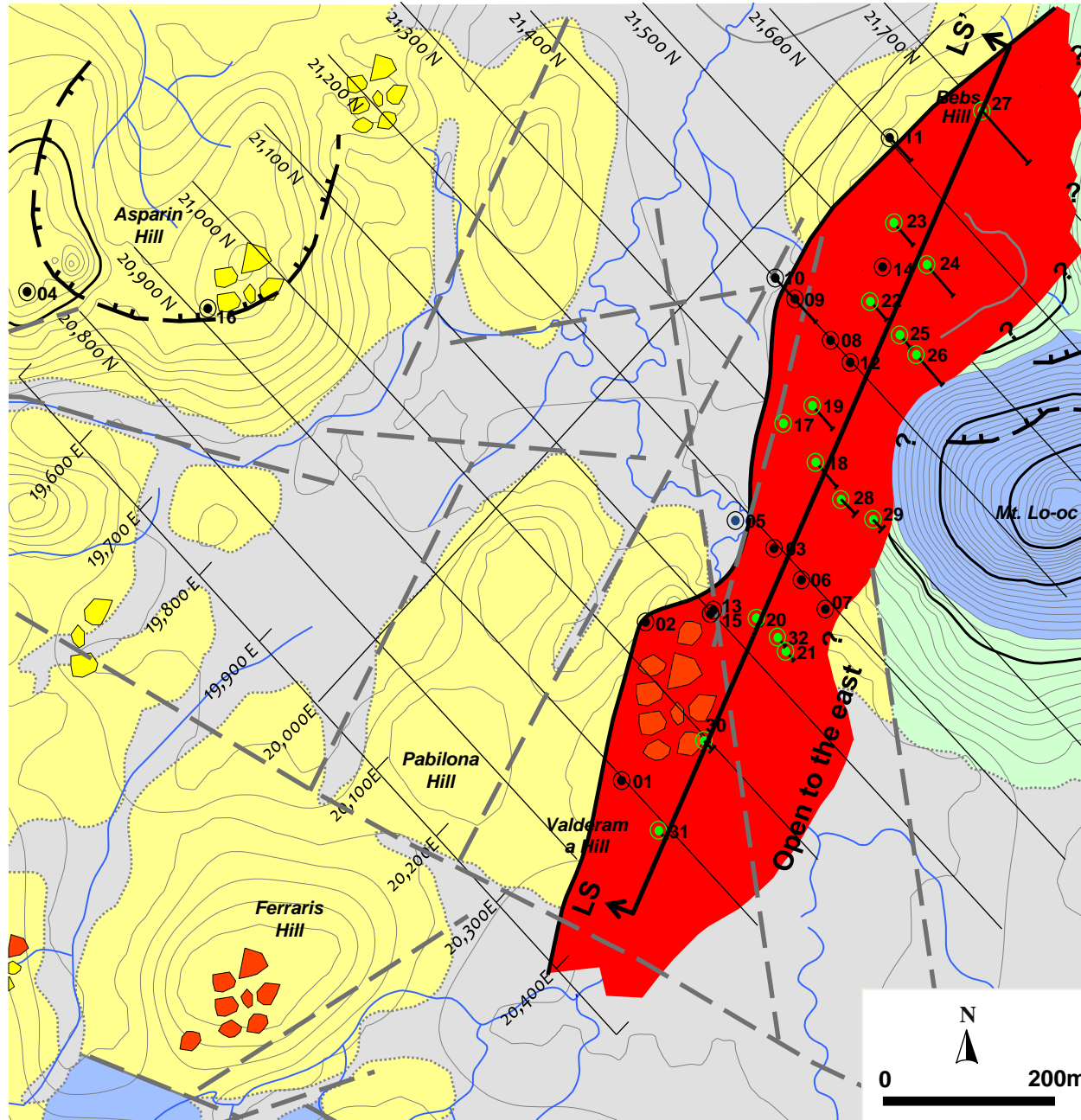


# PAN DE AZUCAR (75%), VALDERAMA SULPHIDE PROJECTION



## MAP KEY

- Quaternary alluvium
  - Andesitic flow dome
  - Andesite and dacite tuffs & volcanics
  - Dacitic volcanics & volcaniclastics
  - Interpreted fault
  - Collapsed features / ring faults
  - Creek
  - Drill hole (2001-2002)
  - Drill hole (2011)
  - MPSA boundary
- Valderama zone**
- Boundary defined from drilling
  - Boundary defined from geophysical and geochemical data
  - Vuggy, leached, quartz alunite altered boulders
  - Dark grey – dark red ferruginous boulders
  - Topography

